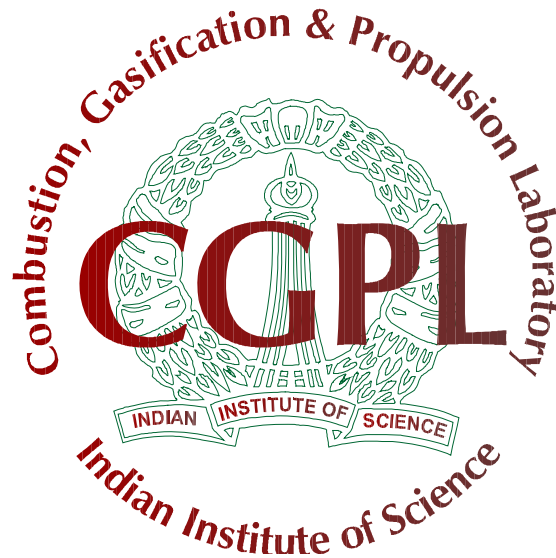


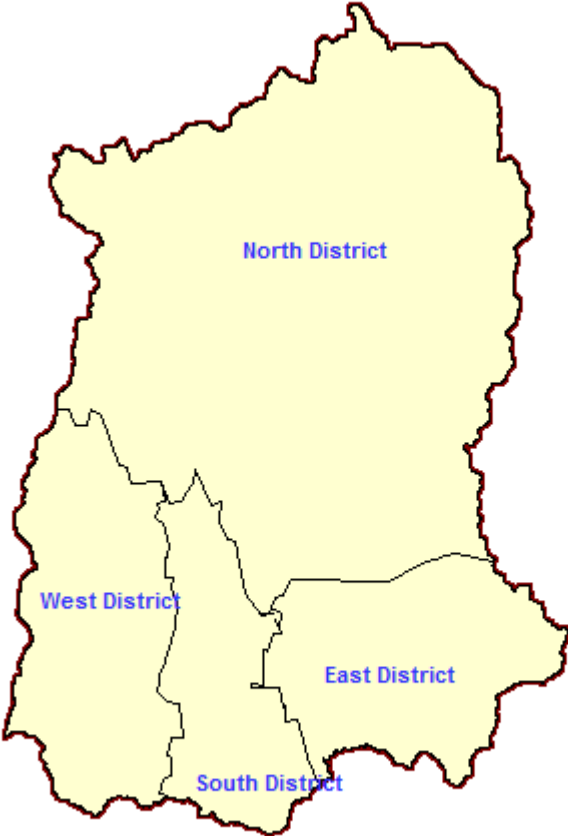
Biomass Mapping for Power Generation for Sikkim

Biomass Manual



Combustion, Gasification & Propulsion Laboratory (CGPL)
Department of Aerospace Engineering
Indian Institute of Science
Bangalore 560 012

Biomass Assessment for Sikkim for Kharif , Rabi and Agro



Biomass Assessment for Sikkim

1. Kharif

- a. State-level Residue-wise----- 01
- b. State-level District-wise----- 02
- c. State-level Taluk-wise----- 02
- d. District-level Residue-wise----- 02
- e. District-level-Taluk-wise----- 03
- f. Taluk-level Residue-wise----- 04

2. Rabi

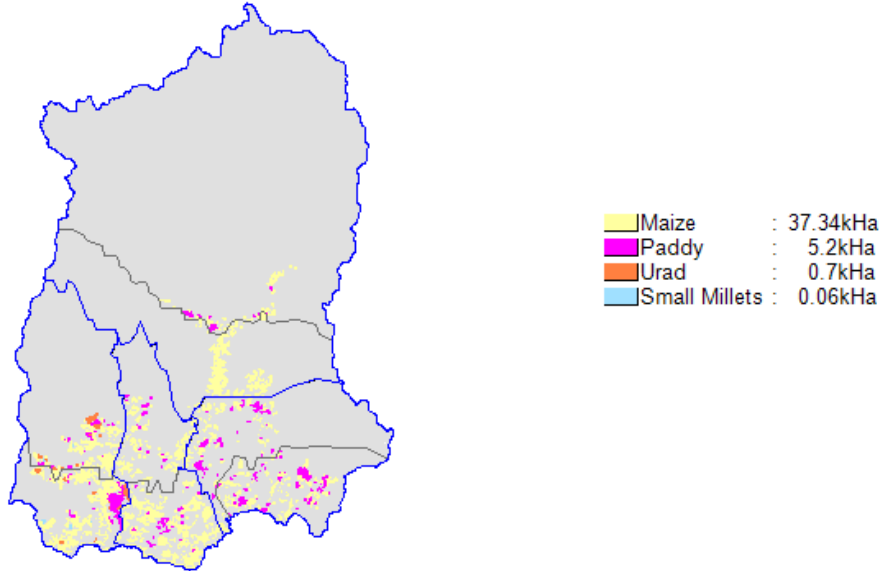
- a. State-level Residue-wise----- 07
- b. State-level District-wise----- 08
- c. State-level Taluk-wise----- 08
- d. District-level Residue-wise----- 08
- e. District-level-Taluk-wise----- 09
- f. Taluk-level Residue-wise----- 10

3. Agro

- a. State-level Residue-wise----- 12
- b. State-level District-wise----- 12
- c. State-level Taluk-wise----- 13
- d. District-level Residue-wise----- 13
- e. District-level-Taluk-wise----- 14
- f. Taluk-level Residue-wise----- 15

Kharif

Sikkim-Kharif



State Level Residue Wise

State level Residue-wise Data for Sikkim; Season : Kharif						
Crop	Residue	Area (kHa)	Crop Production (kT/Yr)	Biomass Generation (kT/Yr)	Biomass Surplus (kT/Yr)	Power Potential (MWe)
Maize	Stalks	37.3	51.2	102.3	10.2	1.3
Maize	Cobs	37.3	51.2	25.6	2.6	0.36
Paddy	Straw	5.2	7.2	10.8	1.1	0.13
Paddy	Husk	5.2	7.2	1.4	1.2	0.13
Others	Others	0.77	0.60	0.78	0.12	0.015
Total		43.3	59.0	140.9	15.1	2.0

State Level District Wise

State level District-wise Data for Sikkim ; Season : Kharif					
District	Area (kHa)	Crop Production (kT/Yr)	Biomass Generation (kT/Yr)	Biomass Surplus (kT/Yr)	Power Potential (MWe)
West District	14.3	19.4	45.7	5.0	0.64
East District	11.5	18.9	45.3	4.9	0.63
South District	14.7	18.5	44.8	4.7	0.61
North District	2.8	2.1	5.1	0.55	0.071
Total	43.3	59.0	140.9	15.1	2.0

State Level Taluk Wise

State level Taluk-wise Data for Sikkim ; Season : Kharif						
District	Taluk	Area (kHa)	Crop Production (kT/Yr)	Biomass Generation (kT/Yr)	Biomass Surplus (kT/Yr)	Power Potential (MWe)
South District	Namchi	11.0	13.9	33.4	3.6	0.46
West District	Soreng	9.8	13.4	31.1	3.5	0.44
East District	Pakyong	6.2	10.1	23.8	2.6	0.34
East District	Gangtok	5.3	8.9	21.5	2.3	0.29
West District	Gyalshing	4.5	6.0	14.5	1.5	0.20
South District	Revong	3.7	4.6	11.4	1.2	0.15
North District	Mangan	2.1	1.5	3.7	0.37	0.049
North District	Chungthang	0.75	0.66	1.4	0.18	0.023
Total		43.3	59.0	140.9	15.1	2.0

District Level Residue Wise

District level Residue-wise Data for East District; Season : Kharif						
Crop	Residue	Area (kHa)	Crop Production (kT/Yr)	Biomass Generation (kT/Yr)	Biomass Surplus (kT/Yr)	Power Potential (MWe)
Maize	Stalks	9.7	16.4	32.8	3.3	0.43
Maize	Cobs	9.7	16.4	8.2	0.82	0.11
Others	Others	1.8	2.5	4.3	0.79	0.090
Total		11.5	18.9	45.3	4.9	0.63

District level Residue-wise Data for North District; Season : Kharif						
Crop	Residue	Area (kHa)	Crop Production (kT/Yr)	Biomass Generation (kT/Yr)	Biomass Surplus (kT/Yr)	Power Potential (MWe)
Others	Others	2.8	2.1	5.1	0.55	0.071
Total		2.8	2.1	5.1	0.55	0.071

District level Residue-wise Data for South District; Season : Kharif						
Crop	Residue	Area (kHa)	Crop Production (kT/Yr)	Biomass Generation (kT/Yr)	Biomass Surplus (kT/Yr)	Power Potential (MWe)
Maize	Stalks	13.4	16.7	33.4	3.3	0.43
Maize	Cobs	13.4	16.7	8.4	0.84	0.12
Others	Others	1.3	1.8	3.0	0.55	0.063
Total		14.7	18.5	44.8	4.7	0.61

District level Residue-wise Data for West District; Season : Kharif						
Crop	Residue	Area (kHa)	Crop Production (kT/Yr)	Biomass Generation (kT/Yr)	Biomass Surplus (kT/Yr)	Power Potential (MWe)
Maize	Stalks	11.6	16.2	32.3	3.2	0.42
Maize	Cobs	11.6	16.2	8.1	0.81	0.11
Others	Others	2.7	3.2	5.3	0.94	0.11
Total		14.3	19.4	45.7	5.0	0.64

District Level Taluk Wise

DistrictLevel Taluk-wise Data for East District ; Season : Kharif					
Taluk	Area (kHa)	Crop Production (kT/Yr)	Biomass Generation (kT/Yr)	Biomass Surplus (kT/Yr)	Power Potential (MWe)
Pakyong	6.2	10.1	23.8	2.6	0.34
Gangtok	5.3	8.9	21.5	2.3	0.29
Total	11.5	18.9	45.3	4.9	0.63

DistrictLevel Taluk-wise Data for North District ; Season : Kharif					
Taluk	Area (kHa)	Crop Production (kT/Yr)	Biomass Generation (kT/Yr)	Biomass Surplus (kT/Yr)	Power Potential (MWe)
Mangan	2.1	1.5	3.7	0.37	0.049
Chungthang	0.75	0.66	1.4	0.18	0.023
Total	2.8	2.1	5.1	0.55	0.071

DistrictLevel Taluk-wise Data for South District ; Season : Kharif					
Taluk	Area (kHa)	Crop Production (kT/Yr)	Biomass Generation (kT/Yr)	Biomass Surplus (kT/Yr)	Power Potential (MWe)
Namchi	11.0	13.9	33.4	3.6	0.46
Revong	3.7	4.6	11.4	1.2	0.15
Total	14.7	18.5	44.8	4.7	0.61

DistrictLevel Taluk-wise Data for West District ; Season : Kharif					
Taluk	Area (kHa)	Crop Production (kT/Yr)	Biomass Generation (kT/Yr)	Biomass Surplus (kT/Yr)	Power Potential (MWe)
Soreng	9.8	13.4	31.1	3.5	0.44
Gyalshing	4.5	6.0	14.5	1.5	0.20
Total	14.3	19.4	45.7	5.0	0.64

Taluk Level Residue Wise

Taluk level Residue-wise Data for Gangtok ; Season : Kharif						
Crop	Residue	Area (kHa)	Crop Production (kT/Yr)	Biomass Generation (kT/Yr)	Biomass Surplus (kT/Yr)	Power Potential (MWe)
Maize	Stalks	4.8	8.1	16.2	1.6	0.21
Maize	Cobs	4.8	8.1	4.0	0.40	0.057
Others	Others	0.56	0.78	1.3	0.24	0.028
Total		5.3	8.9	21.5	2.3	0.29

Taluk level Residue-wise Data for Pakyong ; Season : Kharif						
Crop	Residue	Area (kHa)	Crop Production (kT/Yr)	Biomass Generation (kT/Yr)	Biomass Surplus (kT/Yr)	Power Potential (MWe)
Maize	Stalks	4.9	8.3	16.7	1.7	0.22
Others	Others	1.3	1.8	3.0	0.55	0.063
Maize	Cobs	4.9	8.3	4.2	0.42	0.058
Total		6.2	10.1	23.8	2.6	0.34

Taluk level Residue-wise Data for Chungthang ; Season : Kharif						
Crop	Residue	Area (kHa)	Crop Production (kT/Yr)	Biomass Generation (kT/Yr)	Biomass Surplus (kT/Yr)	Power Potential (MWe)
Others	Others	0.75	0.66	1.4	0.18	0.023
Total		0.75	0.66	1.4	0.18	0.023

Taluk level Residue-wise Data for Mangan ; Season : Kharif						
Crop	Residue	Area (kHa)	Crop Production (kT/Yr)	Biomass Generation (kT/Yr)	Biomass Surplus (kT/Yr)	Power Potential (MWe)
Others	Others	2.1	1.5	3.7	0.37	0.049
Total		2.1	1.5	3.7	0.37	0.049

Taluk level Residue-wise Data for Namchi ; Season : Kharif						
Crop	Residue	Area (kHa)	Crop Production (kT/Yr)	Biomass Generation (kT/Yr)	Biomass Surplus (kT/Yr)	Power Potential (MWe)
Maize	Stalks	9.8	12.3	24.6	2.5	0.32
Maize	Cobs	9.8	12.3	6.1	0.61	0.086
Others	Others	1.2	1.6	2.7	0.49	0.057
Total		11.0	13.9	33.4	3.6	0.46

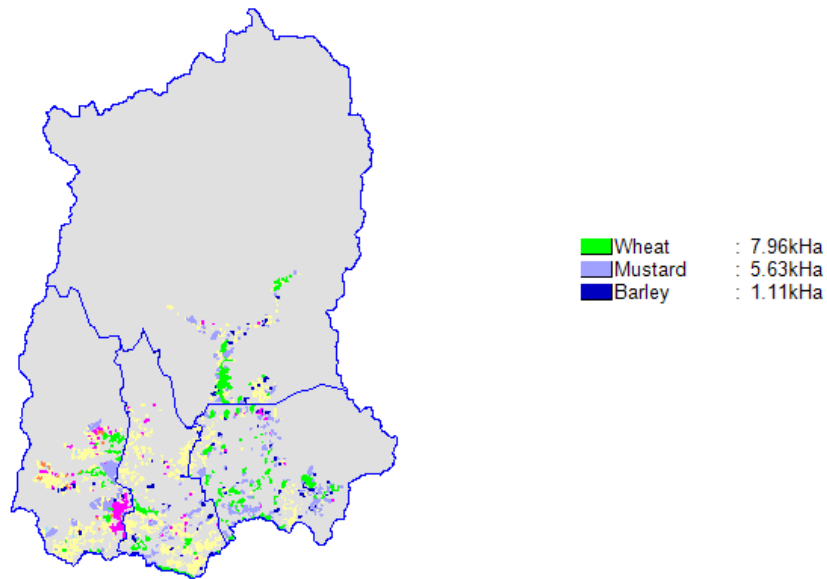
Taluk level Residue-wise Data for Revong ; Season : Kharif						
Crop	Residue	Area (kHa)	Crop Production (kT/Yr)	Biomass Generation (kT/Yr)	Biomass Surplus (kT/Yr)	Power Potential (MWe)
Maize	Stalks	3.5	4.4	8.9	0.89	0.12
Others	Others	0.13	0.18	2.5	0.28	0.038
Total		3.7	4.6	11.4	1.2	0.15

Taluk level Residue-wise Data for Gyalshing ; Season : Kharif						
Crop	Residue	Area (kHa)	Crop Production (kT/Yr)	Biomass Generation (kT/Yr)	Biomass Surplus (kT/Yr)	Power Potential (MWe)
Maize	Stalks	4.0	5.5	11.0	1.1	0.14
Others	Others	0.52	0.54	3.6	0.42	0.055
Total		4.5	6.0	14.5	1.5	0.20

Taluk level Residue-wise Data for Soreng ; Season : Kharif						
Crop	Residue	Area (kHa)	Crop Production (kT/Yr)	Biomass Generation (kT/Yr)	Biomass Surplus (kT/Yr)	Power Potential (MWe)
Maize	Stalks	7.7	10.7	21.3	2.1	0.28
Others	Others	2.1	2.7	4.4	0.80	0.092
Maize	Cobs	7.7	10.7	5.3	0.53	0.075
Total		9.8	13.4	31.1	3.5	0.44

Rabi

Sikkim-Rabi



State Level Residue Wise

State level Residue-wise Data for Sikkim; Season : Rabi						
Crop	Residue	Area (kHa)	Crop Production (kT/Yr)	Biomass Generation (kT/Yr)	Biomass Surplus (kT/Yr)	Power Potential (MWe)
Mustard	Husk	5.6	2.4	1.2	1.1	0.14
Wheat	Pod	8.0	6.5	1.9	0.97	0.14
Wheat	Stalks	8.0	6.5	9.7	0.97	0.13
Mustard	Stalks	5.6	2.4	4.4	0.44	0.057
Others	Others	1.1	1.2	1.6	0.16	0.021
Total		14.7	10.1	18.8	3.7	0.48

State Level District Wise

State level District-wise Data for Sikkim ; Season : Rabi					
District	Area (kHa)	Crop Production (kT/Yr)	Biomass Generation (kT/Yr)	Biomass Surplus (kT/Yr)	Power Potential (MWe)
East District	5.2	3.6	6.8	1.4	0.18
West District	4.4	3.5	6.4	1.2	0.16
South District	3.2	1.7	3.4	0.72	0.092
North District	1.8	1.2	2.2	0.40	0.052
Total	14.7	10.1	18.8	3.7	0.48

State Level Taluk Wise

State level Taluk-wise Data for Sikkim ; Season : Rabi						
District	Taluk	Area (kHa)	Crop Production (kT/Yr)	Biomass Generation (kT/Yr)	Biomass Surplus (kT/Yr)	Power Potential (MWe)
West District	Gyalshing	3.3	2.5	4.8	0.91	0.12
East District	Pakyong	3.1	2.1	4.0	0.81	0.10
South District	Namchi	3.2	1.7	3.3	0.72	0.092
East District	Gangtok	2.1	1.5	2.9	0.55	0.071
North District	Mangan	1.4	0.95	1.7	0.30	0.040
West District	Soreng	1.1	1.00	1.6	0.30	0.038
North District	Chungthang	0.43	0.25	0.48	0.096	0.012
South District	Revong	0.044	0.022	0.029	0.0029	0.00037
Total		14.7	10.1	18.8	3.7	0.48

District Level Residue Wise

District level Residue-wise Data for East District; Season : Rabi						
Crop	Residue	Area (kHa)	Crop Production (kT/Yr)	Biomass Generation (kT/Yr)	Biomass Surplus (kT/Yr)	Power Potential (MWe)
Others	Others	0.30	0.30	5.6	0.56	0.073
Mustard	Husk	2.2	0.90	0.45	0.43	0.052
Wheat	Pod	2.7	2.4	0.72	0.36	0.051
Total		5.2	3.6	6.8	1.4	0.18

District level Residue-wise Data for North District; Season : Rabi						
Crop	Residue	Area (kHa)	Crop Production (kT/Yr)	Biomass Generation (kT/Yr)	Biomass Surplus (kT/Yr)	Power Potential (MWe)
Others	Others	1.8	1.2	2.2	0.40	0.052
Total		1.8	1.2	2.2	0.40	0.052

District level Residue-wise Data for South District; Season : Rabi						
Crop	Residue	Area (kHa)	Crop Production (kT/Yr)	Biomass Generation (kT/Yr)	Biomass Surplus (kT/Yr)	Power Potential (MWe)
Others	Others	3.2	1.7	3.4	0.72	0.092
Total		3.2	1.7	3.4	0.72	0.092

District level Residue-wise Data for West District; Season : Rabi						
Crop	Residue	Area (kHa)	Crop Production (kT/Yr)	Biomass Generation (kT/Yr)	Biomass Surplus (kT/Yr)	Power Potential (MWe)
Others	Others	4.4	3.5	6.4	1.2	0.16
Total		4.4	3.5	6.4	1.2	0.16

District Level Taluk Wise

DistrictLevel Taluk-wise Data for East District ; Season : Rabi					
Taluk	Area (kHa)	Crop Production (kT/Yr)	Biomass Generation (kT/Yr)	Biomass Surplus (kT/Yr)	Power Potential (MWe)
Pakyong	3.1	2.1	4.0	0.81	0.10
Gangtok	2.1	1.5	2.9	0.55	0.071
Total	5.2	3.6	6.8	1.4	0.18

DistrictLevel Taluk-wise Data for North District ; Season : Rabi					
Taluk	Area (kHa)	Crop Production (kT/Yr)	Biomass Generation (kT/Yr)	Biomass Surplus (kT/Yr)	Power Potential (MWe)
Mangan	1.4	0.95	1.7	0.30	0.040
Chungthang	0.43	0.25	0.48	0.096	0.012
Total	1.8	1.2	2.2	0.40	0.052

DistrictLevel Taluk-wise Data for South District ; Season : Rabi					
Taluk	Area (kHa)	Crop Production (kT/Yr)	Biomass Generation (kT/Yr)	Biomass Surplus (kT/Yr)	Power Potential (MWe)
Namchi	3.2	1.7	3.3	0.72	0.092
Revong	0.044	0.022	0.029	0.0029	0.00037
Total	3.2	1.7	3.4	0.72	0.092

DistrictLevel Taluk-wise Data for West District ; Season : Rabi					
Taluk	Area (kHa)	Crop Production (kT/Yr)	Biomass Generation (kT/Yr)	Biomass Surplus (kT/Yr)	Power Potential (MWe)
Gyalshing	3.3	2.5	4.8	0.91	0.12
Soreng	1.1	1.00	1.6	0.30	0.038
Total	4.4	3.5	6.4	1.2	0.16

Taluk Level Residue Wise

Taluk level Residue-wise Data for Gangtok ; Season : Rabi						
Crop	Residue	Area (kHa)	Crop Production (kT/Yr)	Biomass Generation (kT/Yr)	Biomass Surplus (kT/Yr)	Power Potential (MWe)
Others	Others	2.1	1.5	2.9	0.55	0.071
Total		2.1	1.5	2.9	0.55	0.071

Taluk level Residue-wise Data for Pakyong ; Season : Rabi						
Crop	Residue	Area (kHa)	Crop Production (kT/Yr)	Biomass Generation (kT/Yr)	Biomass Surplus (kT/Yr)	Power Potential (MWe)
Others	Others	3.1	2.1	4.0	0.81	0.10
Total		3.1	2.1	4.0	0.81	0.10

Taluk level Residue-wise Data for Chungthang ; Season : Rabi						
Crop	Residue	Area (kHa)	Crop Production (kT/Yr)	Biomass Generation (kT/Yr)	Biomass Surplus (kT/Yr)	Power Potential (MWe)
Others	Others	0.43	0.25	0.48	0.096	0.012
Total		0.43	0.25	0.48	0.096	0.012

Taluk level Residue-wise Data for Mangan ; Season : Rabi						
Crop	Residue	Area (kHa)	Crop Production (kT/Yr)	Biomass Generation (kT/Yr)	Biomass Surplus (kT/Yr)	Power Potential (MWe)
Others	Others	1.4	0.95	1.7	0.30	0.040
Total		1.4	0.95	1.7	0.30	0.040

Taluk level Residue-wise Data for Namchi ; Season : Rabi						
Crop	Residue	Area (kHa)	Crop Production (kT/Yr)	Biomass Generation (kT/Yr)	Biomass Surplus (kT/Yr)	Power Potential (MWe)
Others	Others	3.2	1.7	3.3	0.72	0.092
Total		3.2	1.7	3.3	0.72	0.092

Taluk level Residue-wise Data for Revong ; Season : Rabi						
Crop	Residue	Area (kHa)	Crop Production (kT/Yr)	Biomass Generation (kT/Yr)	Biomass Surplus (kT/Yr)	Power Potential (MWe)
Others	Others	0.044	0.022	0.029	0.0029	0.00037
Total		0.044	0.022	0.029	0.0029	0.00037

Taluk level Residue-wise Data for Gyalshing ; Season : Rabi						
Crop	Residue	Area (kHa)	Crop Production (kT/Yr)	Biomass Generation (kT/Yr)	Biomass Surplus (kT/Yr)	Power Potential (MWe)
Others	Others	3.3	2.5	4.8	0.91	0.12
Total		3.3	2.5	4.8	0.91	0.12

Taluk level Residue-wise Data for Soreng ; Season : Rabi						
Crop	Residue	Area (kHa)	Crop Production (kT/Yr)	Biomass Generation (kT/Yr)	Biomass Surplus (kT/Yr)	Power Potential (MWe)
Others	Others	1.1	1.00	1.6	0.30	0.038
Total		1.1	1.00	1.6	0.30	0.038

Agro

State Level Residue Wise

State level Residue-wise Data for Sikkim; Biomass Class : Agro						
Crop	Residue	Area (kHa)	Crop Production (kT/Yr)	Biomass Generation (kT/Yr)	Biomass Surplus (kT/Yr)	Power Potential (MWe)
Maize	Stalks	37.3	51.2	102.3	10.2	1.3
Maize	Cobs	37.3	51.2	25.6	2.6	0.36
Mustard	Husk	5.6	2.4	1.2	1.1	0.14
Wheat	Pod	8.0	6.5	1.9	0.97	0.14
Paddy	Straw	5.2	7.2	10.8	1.1	0.13
Paddy	Husk	5.2	7.2	1.4	1.2	0.13
Wheat	Stalks	8.0	6.5	9.7	0.97	0.13
Mustard	Stalks	5.6	2.4	4.4	0.44	0.057
Others	Others	1.9	1.8	2.4	0.28	0.036
Total		58.0	69.1	159.7	18.8	2.4

State Level District Wise

State level District-wise Data for Sikkim ; Biomass Class : Agro						
District	Area (kHa)	Crop Production (kT/Yr)	Biomass Generation (kT/Yr)	Biomass Surplus (kT/Yr)	Power Potential (MWe)	
East District	16.8	22.6	52.2	6.2	0.81	
West District	18.7	22.9	52.1	6.2	0.80	
South District	17.9	20.2	48.2	5.4	0.71	
North District	4.7	3.3	7.3	0.95	0.12	
Total		58.0	69.1	159.7	18.8	2.4

State Level Taluk Wise

State level Taluk-wise Data for Sikkim ; Biomass Class : Agro						
District	Taluk	Area (kHa)	Crop Production (kT/Yr)	Biomass Generation (kT/Yr)	Biomass Surplus (kT/Yr)	Power Potential (MWe)
South District	Namchi	14.2	15.6	36.8	4.3	0.55
West District	Soreng	10.9	14.4	32.7	3.8	0.48
East District	Pakyong	9.3	12.2	27.8	3.4	0.44
East District	Gangtok	7.4	10.4	24.4	2.8	0.37
West District	Gyalshing	7.8	8.6	19.3	2.4	0.32
South District	Revong	3.7	4.6	11.4	1.2	0.15
North District	Mangan	3.5	2.4	5.4	0.67	0.088
North District	Chungthang	1.2	0.92	1.9	0.28	0.035
Total		58.0	69.1	159.7	18.8	2.4

District Level Residue Wise

District level Residue-wise Data for East District; Biomass Class : Agro						
Crop	Residue	Area (kHa)	Crop Production (kT/Yr)	Biomass Generation (kT/Yr)	Biomass Surplus (kT/Yr)	Power Potential (MWe)
Maize	Stalks	9.7	16.4	32.8	3.3	0.43
Others	Others	2.1	2.8	10.0	1.4	0.16
Maize	Cobs	9.7	16.4	8.2	0.82	0.11
Mustard	Husk	2.2	0.90	0.45	0.43	0.052
Wheat	Pod	2.7	2.4	0.72	0.36	0.051
Total		16.8	22.6	52.2	6.2	0.81

District level Residue-wise Data for North District; Biomass Class : Agro						
Crop	Residue	Area (kHa)	Crop Production (kT/Yr)	Biomass Generation (kT/Yr)	Biomass Surplus (kT/Yr)	Power Potential (MWe)
Others	Others	4.7	3.3	7.3	0.95	0.12
Total		4.7	3.3	7.3	0.95	0.12

District level Residue-wise Data for South District; Biomass Class : Agro						
Crop	Residue	Area (kHa)	Crop Production (kT/Yr)	Biomass Generation (kT/Yr)	Biomass Surplus (kT/Yr)	Power Potential (MWe)
Maize	Stalks	13.4	16.7	33.4	3.3	0.43
Others	Others	4.5	3.5	6.4	1.3	0.16
Maize	Cobs	13.4	16.7	8.4	0.84	0.12
Total		17.9	20.2	48.2	5.4	0.71

District level Residue-wise Data for West District; Biomass Class : Agro						
Crop	Residue	Area (kHa)	Crop Production (kT/Yr)	Biomass Generation (kT/Yr)	Biomass Surplus (kT/Yr)	Power Potential (MWe)
Maize	Stalks	11.6	16.2	32.3	3.2	0.42
Others	Others	7.1	6.8	11.7	2.1	0.27
Maize	Cobs	11.6	16.2	8.1	0.81	0.11
Total		18.7	22.9	52.1	6.2	0.80

District Level Taluk Wise

DistrictLevel Taluk-wise Data for East District ; Biomass Class : Agro					
Taluk	Area (kHa)	Crop Production (kT/Yr)	Biomass Generation (kT/Yr)	Biomass Surplus (kT/Yr)	Power Potential (MWe)
Pakyong	9.3	12.2	27.8	3.4	0.44
Gangtok	7.4	10.4	24.4	2.8	0.37
Total	16.8	22.6	52.2	6.2	0.81

DistrictLevel Taluk-wise Data for North District ; Biomass Class : Agro					
Taluk	Area (kHa)	Crop Production (kT/Yr)	Biomass Generation (kT/Yr)	Biomass Surplus (kT/Yr)	Power Potential (MWe)
Mangan	3.5	2.4	5.4	0.67	0.088
Chungthang	1.2	0.92	1.9	0.28	0.035
Total	4.7	3.3	7.3	0.95	0.12

DistrictLevel Taluk-wise Data for South District ; Biomass Class : Agro					
Taluk	Area (kHa)	Crop Production (kT/Yr)	Biomass Generation (kT/Yr)	Biomass Surplus (kT/Yr)	Power Potential (MWe)
Namchi	14.2	15.6	36.8	4.3	0.55
Revong	3.7	4.6	11.4	1.2	0.15
Total	17.9	20.2	48.2	5.4	0.71

DistrictLevel Taluk-wise Data for West District ; Biomass Class : Agro					
Taluk	Area (kHa)	Crop Production (kT/Yr)	Biomass Generation (kT/Yr)	Biomass Surplus (kT/Yr)	Power Potential (MWe)
Soreng	10.9	14.4	32.7	3.8	0.48
Gyalshing	7.8	8.6	19.3	2.4	0.32
Total	18.7	22.9	52.1	6.2	0.80

Taluk Level Residue Wise

Taluk level Residue-wise Data for Gangtok ; Biomass Class : Agro						
Crop	Residue	Area (kHa)	Crop Production (kT/Yr)	Biomass Generation (kT/Yr)	Biomass Surplus (kT/Yr)	Power Potential (MWe)
Maize	Stalks	4.8	8.1	16.2	1.6	0.21
Others	Others	2.6	2.3	4.2	0.79	0.099
Maize	Cobs	4.8	8.1	4.0	0.40	0.057
Total		7.4	10.4	24.4	2.8	0.37

Taluk level Residue-wise Data for Pakyong ; Biomass Class : Agro						
Crop	Residue	Area (kHa)	Crop Production (kT/Yr)	Biomass Generation (kT/Yr)	Biomass Surplus (kT/Yr)	Power Potential (MWe)
Maize	Stalks	4.9	8.3	16.7	1.7	0.22
Others	Others	4.4	3.8	7.0	1.4	0.17
Maize	Cobs	4.9	8.3	4.2	0.42	0.058
Total		9.3	12.2	27.8	3.4	0.44

Taluk level Residue-wise Data for Chungthang ; Biomass Class : Agro						
Crop	Residue	Area (kHa)	Crop Production (kT/Yr)	Biomass Generation (kT/Yr)	Biomass Surplus (kT/Yr)	Power Potential (MWe)
Others	Others	1.2	0.92	1.9	0.28	0.035
Total		1.2	0.92	1.9	0.28	0.035

Taluk level Residue-wise Data for Mangan ; Biomass Class : Agro						
Crop	Residue	Area (kHa)	Crop Production (kT/Yr)	Biomass Generation (kT/Yr)	Biomass Surplus (kT/Yr)	Power Potential (MWe)
Others	Others	3.5	2.4	5.4	0.67	0.088
Total		3.5	2.4	5.4	0.67	0.088

Taluk level Residue-wise Data for Namchi ; Biomass Class : Agro						
Crop	Residue	Area (kHa)	Crop Production (kT/Yr)	Biomass Generation (kT/Yr)	Biomass Surplus (kT/Yr)	Power Potential (MWe)
Maize	Stalks	9.8	12.3	24.6	2.5	0.32
Others	Others	4.4	3.3	6.1	1.2	0.15
Maize	Cobs	9.8	12.3	6.1	0.61	0.086
Total		14.2	15.6	36.8	4.3	0.55

Taluk level Residue-wise Data for Revong ; Biomass Class : Agro						
Crop	Residue	Area (kHa)	Crop Production (kT/Yr)	Biomass Generation (kT/Yr)	Biomass Surplus (kT/Yr)	Power Potential (MWe)
Maize	Stalks	3.5	4.4	8.9	0.89	0.12
Others	Others	0.18	0.21	2.6	0.28	0.038
Total		3.7	4.6	11.4	1.2	0.15

Taluk level Residue-wise Data for Gyalshing ; Biomass Class : Agro						
Crop	Residue	Area (kHa)	Crop Production (kT/Yr)	Biomass Generation (kT/Yr)	Biomass Surplus (kT/Yr)	Power Potential (MWe)
Others	Others	3.9	3.1	8.3	1.3	0.17
Maize	Stalks	4.0	5.5	11.0	1.1	0.14
Total		7.8	8.6	19.3	2.4	0.32

Taluk level Residue-wise Data for Soreng ; Biomass Class : Agro						
Crop	Residue	Area (kHa)	Crop Production (kT/Yr)	Biomass Generation (kT/Yr)	Biomass Surplus (kT/Yr)	Power Potential (MWe)
Maize	Stalks	7.7	10.7	21.3	2.1	0.28
Others	Others	3.2	3.7	6.1	1.1	0.13
Maize	Cobs	7.7	10.7	5.3	0.53	0.075
Total		10.9	14.4	32.7	3.8	0.48

Note:

Biomass Data for 'Yearly' for 'Sikkim' is not Available , i.e. Perennial crops data are not available at CGPL

Others' contributes to collection of crops whose Power Potential is less than 0.05MWyre. These residues will not be separately listed instead they are aggregated into 'Others'.

The Tolerance for the above data at Taluk level is about 25%. The residue-wise data at taluk level may have a tolerance of more than 25% depending on spatial availability of agro-area and spatial aggregation as compared to statistically reported crop area. District Survey instituted by MNRE [Ministry of New & Renewable Energy] was done and biomass was reported for period beyond 1999 of the States country wide. The updated crop data at the district level is used as an input to construct the Biomass Atlas Enabling spatial extraction of the biomass data tables above.